



Title Plan - LT 484831

Survey Number LT 484831
Surveyor Reference E18447 KSP7A
Surveyor Christopher David Hawes
Survey Firm Davie Lovell-Smith Ltd
Surveyor Declaration

Survey Details

Dataset Description Lots 242-245, 251-267, 400, 401, 992, 993 and 1001 being Subdivision of Lot 925 DP 479877 and Lots 1 & 2 DP 3256

Status Initiated

Land District Canterbury **Survey Class** Class A

Submitted Date **Survey Approval Date**
Deposit Date

Territorial Authorities

Christchurch City

Comprised In

CT 616567
CT 669678

Created Parcels

Parcels	Parcel Intent	Area	CT Reference
Lot 242 Deposited Plan 484831	Fee Simple Title	0.0515 Ha	687781
Lot 243 Deposited Plan 484831	Fee Simple Title	0.0519 Ha	687782
Lot 244 Deposited Plan 484831	Fee Simple Title	0.0519 Ha	687783
Lot 245 Deposited Plan 484831	Fee Simple Title	0.0582 Ha	687784
Lot 251 Deposited Plan 484831	Fee Simple Title	0.0372 Ha	687785
Lot 252 Deposited Plan 484831	Fee Simple Title	0.0372 Ha	687786
Lot 253 Deposited Plan 484831	Fee Simple Title	0.0372 Ha	687787
Lot 254 Deposited Plan 484831	Fee Simple Title	0.0372 Ha	687788
Lot 255 Deposited Plan 484831	Fee Simple Title	0.0372 Ha	687789
Lot 256 Deposited Plan 484831	Fee Simple Title	0.0372 Ha	687790
Lot 257 Deposited Plan 484831	Fee Simple Title	0.0372 Ha	687791
Lot 258 Deposited Plan 484831	Fee Simple Title	0.0374 Ha	687792
Lot 259 Deposited Plan 484831	Fee Simple Title	0.0387 Ha	687793
Lot 260 Deposited Plan 484831	Fee Simple Title	0.0374 Ha	687794
Lot 261 Deposited Plan 484831	Fee Simple Title	0.0372 Ha	687795
Lot 262 Deposited Plan 484831	Fee Simple Title	0.0372 Ha	687796
Lot 263 Deposited Plan 484831	Fee Simple Title	0.0372 Ha	687797
Lot 264 Deposited Plan 484831	Fee Simple Title	0.0372 Ha	687798
Lot 265 Deposited Plan 484831	Fee Simple Title	0.0372 Ha	687799
Lot 266 Deposited Plan 484831	Fee Simple Title	0.0372 Ha	687800
Lot 267 Deposited Plan 484831	Fee Simple Title	0.0372 Ha	687801
Lot 400 Deposited Plan 484831	Fee Simple Title	3.1374 Ha	687802

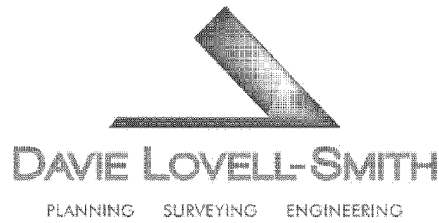


Title Plan - LT 484831

Created Parcels

Parcels	Parcel Intent	Area	CT Reference
Lot 401 Deposited Plan 484831	Fee Simple Title	0.2002 Ha	687803
Lot 992 Deposited Plan 484831	Fee Simple Title	23.1750 Ha	687804
Lot 1001 Deposited Plan 484831	Vesting on Deposit for Road	0.9420 Ha	
Lot 993 Deposited Plan 484831	Fee Simple Title	0.0005 Ha	687805
Area A Deposited Plan 484831	Easement		
Area B Deposited Plan 484831	Easement		
Area C Deposited Plan 484831	Easement		
Area D Deposited Plan 484831	Easement		
Area E Deposited Plan 484831	Easement		
Total Area		<hr/> 28.3029 Ha	

Schedule / Memorandum



Davie, Lovell-Smith Ltd
116 Wrights Road,
PO Box 679,
Christchurch 8140,
New Zealand
Telephone (03) 379-0793,
E-mail: office@dls.co.nz

Our Ref: E18447

D.P.484831

MEMORANDUM OF EASEMENTS

Purpose	Servient Tenement	Shown	Dominant Tenement
Right to convey electricity.	Lot 993	A	Lot 245

SCHEDULE OF EASEMENTS IN GROSS

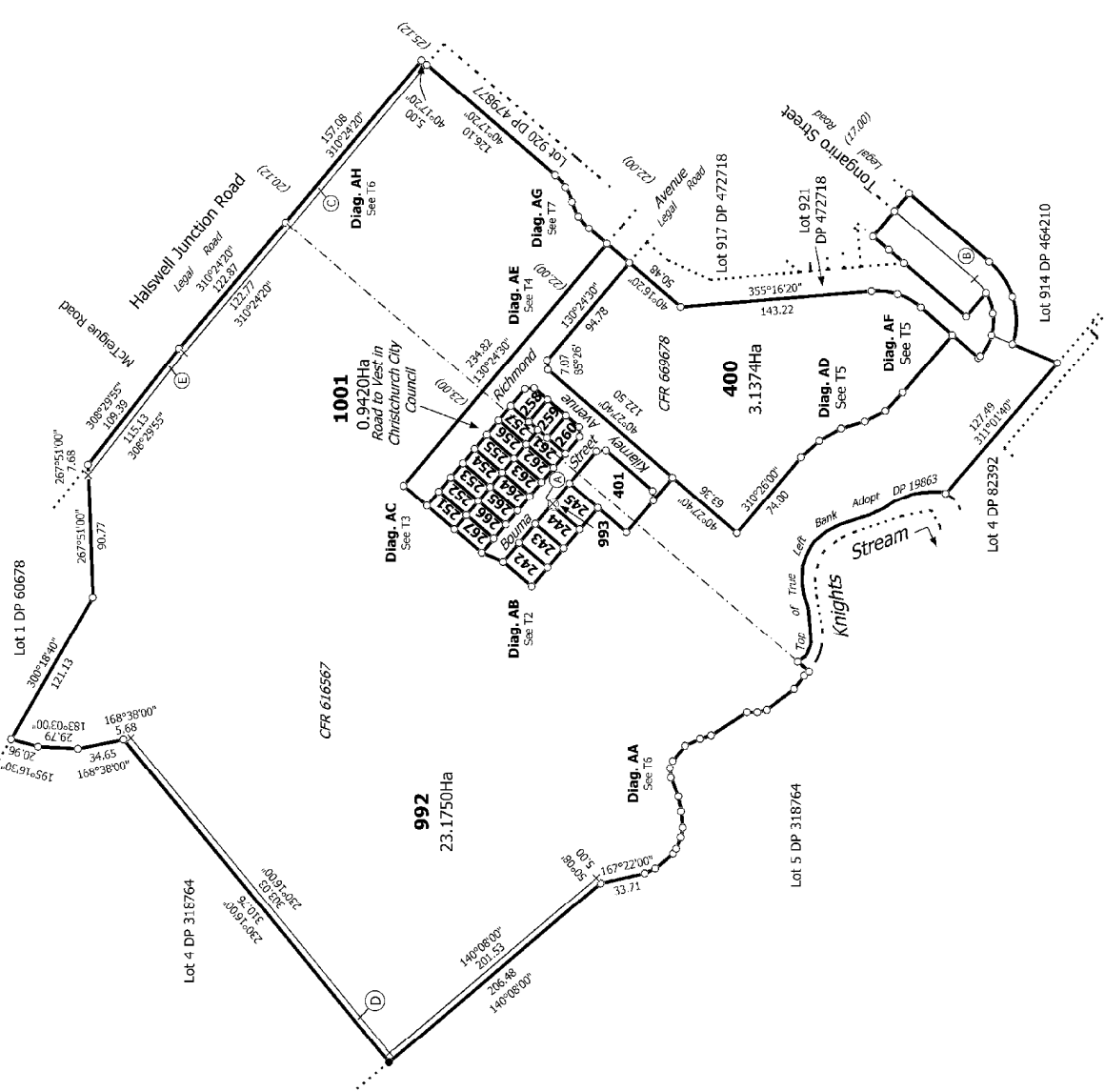
Purpose	Servient Tenement	Shown	Grantee
Right to convey water in gross..	Lot 992	E	Christchurch City Council

SCHEDULE OF EXISTING EASEMENTS

Purpose	Servient Tenement	Shown	Document
Right to convey water in gross.	Lot 992	C	EI 9900340.6
Right to convey water in gross.	Lot 992	C	EI 9305337.6
Right to drain water in gross.	Lot 992	B	EI 9676959.5
Right to convey water in gross.	Lot 992	D	T 989430.1



Diag. A



ET6947
RMA 92027261/14

T 117

Land District: Canterbury

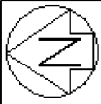
Surveyor: Christopher David Hawes
Firm: Davie Lovell-Smith Ltd

Lots 242-245, 251-267, 400, 401, 992, 993 and 1001 being Subdivision of Lot 925 DP 479877 and Lots 1 & 2 DP 3256

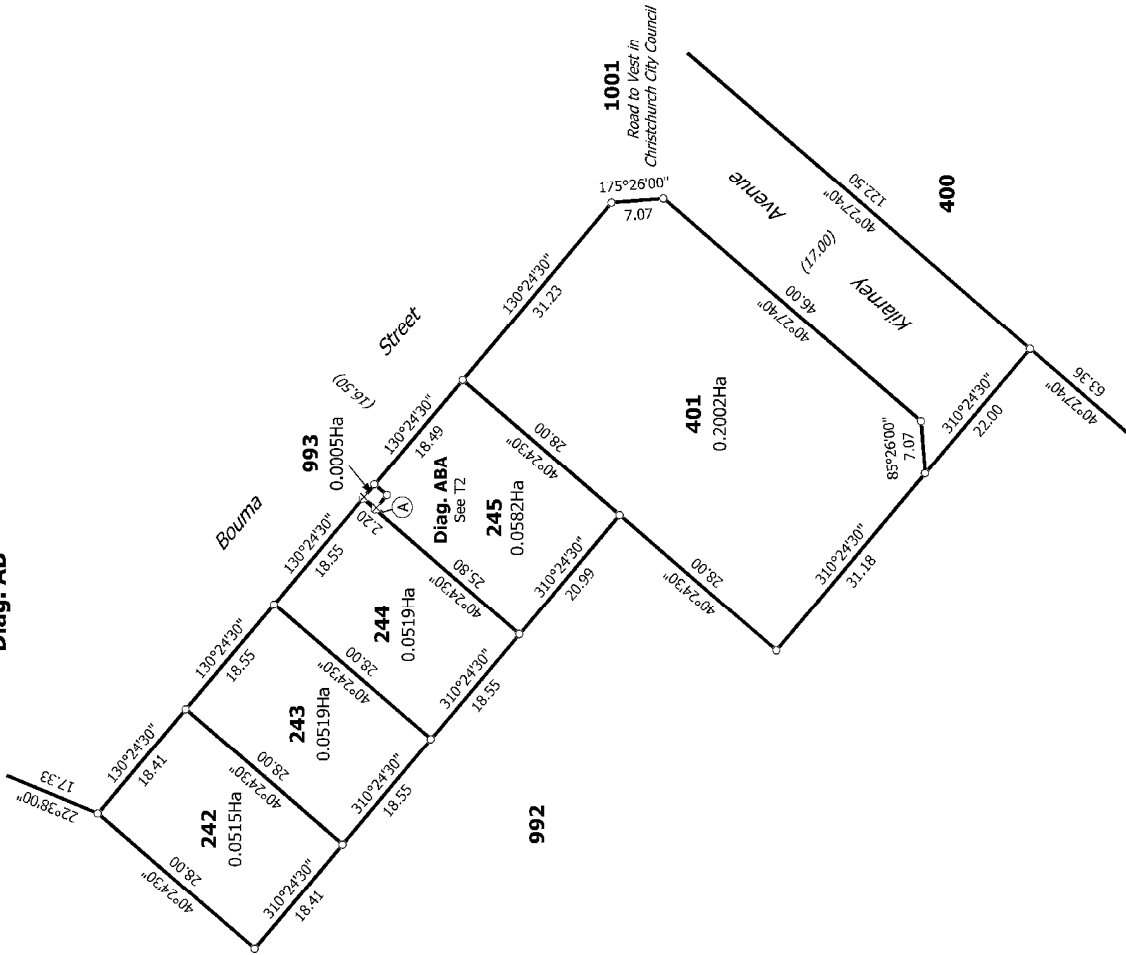
**Title Plan
LT 484831
DRAFT**

Digitally Generated Plan
Generated on: 19/03/2015 4:20pm Page 4 of 10

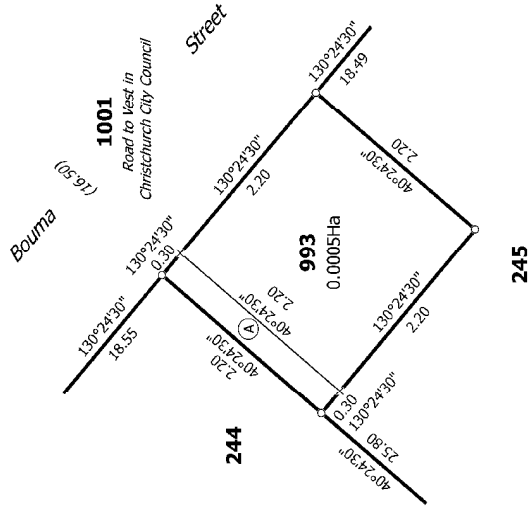




Diag. AB



Diag. ABA



T 2/7

Land District: Canterbury

Digitally Generated Plan

Generated on: 19/03/2015 4:20pm Page 5 of 10

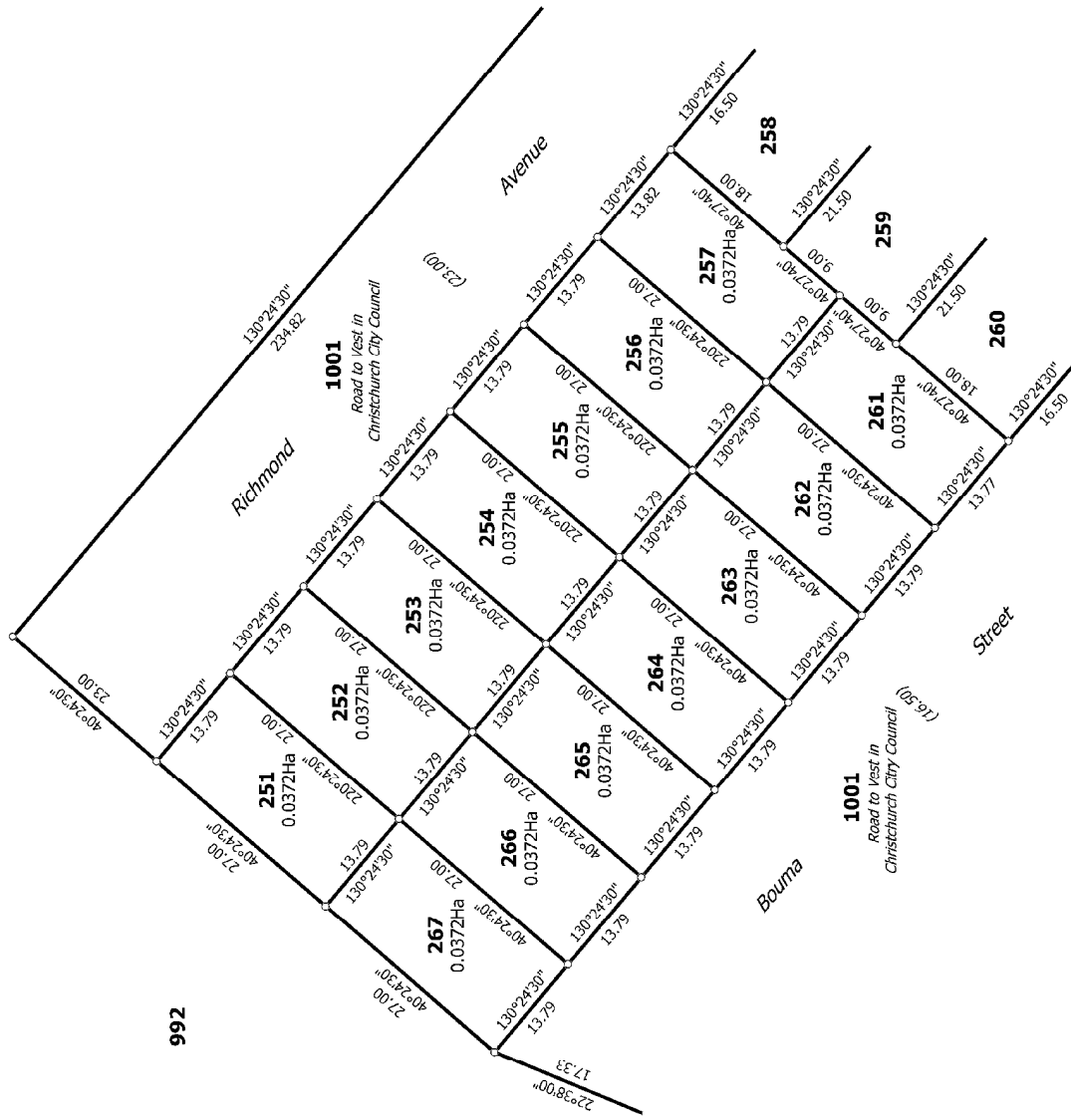
Lots 242-245, 251-267, 400, 401, 992, 993 and 1001 being Subdivision of Lot 925 DP 479877 and Lots 1 & 2 DP 3256

Surveyor: Christopher David Hawes
Firm: Davie Lovell-Smith Ltd

Title Plan
LT 484831
DRAFT



Diag. AC

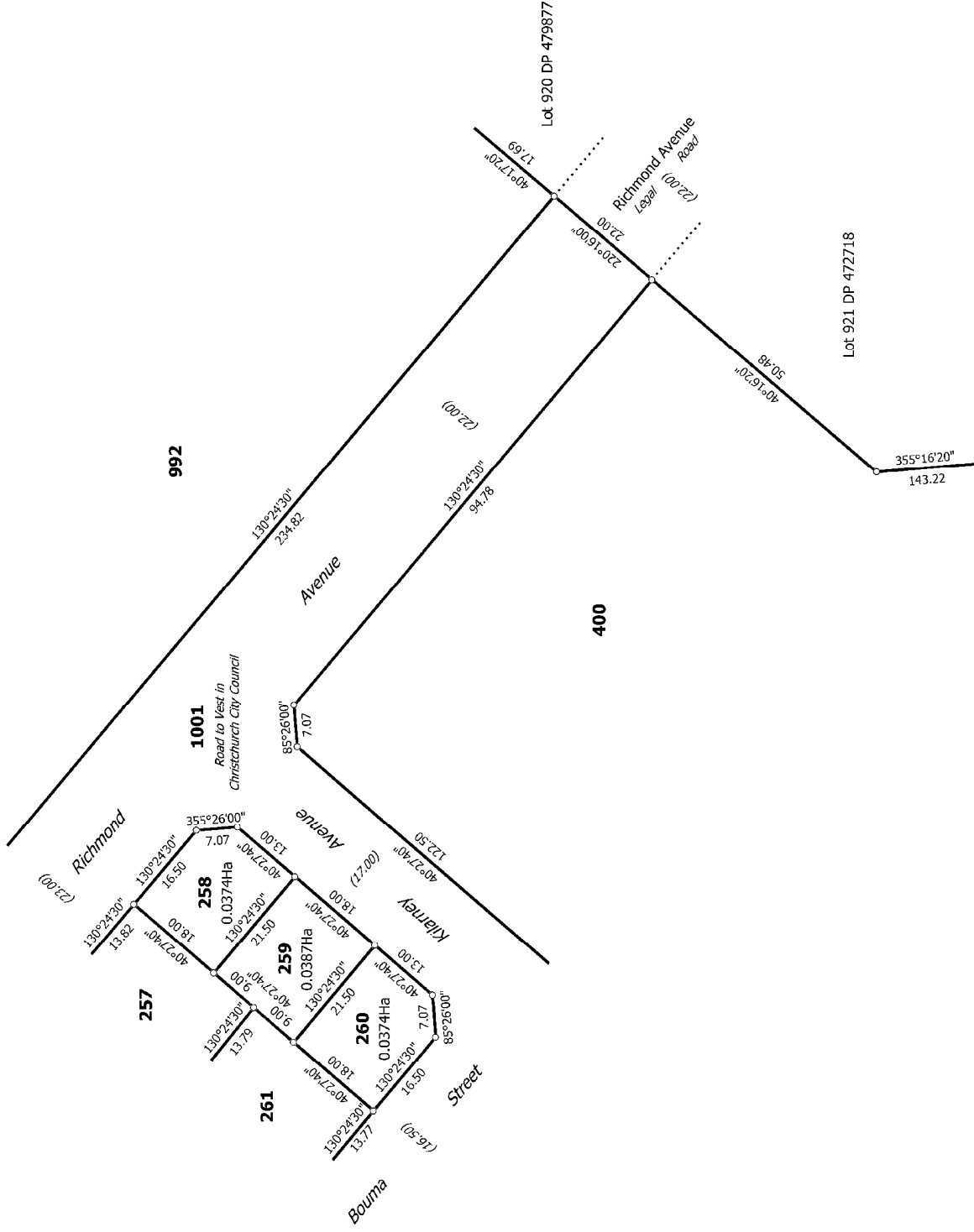


T 3/7

Land District: Canterbury	Surveyor: Christopher David Hawes Firm: Davie Lovell-Smith Ltd	Title Plan LT 484831 DRAFT
Digitally Generated Plan Generated on: 19/03/2015 4:20pm Page 6 of 10		Lots 242-245, 251-267, 400, 401, 992, 993 and 1001 being Subdivision of Lot 925 DP 479877 and Lots 1 & 2 DP 3256



Diag. AE



T 417

Title Plan
LT 484831
DRAFT

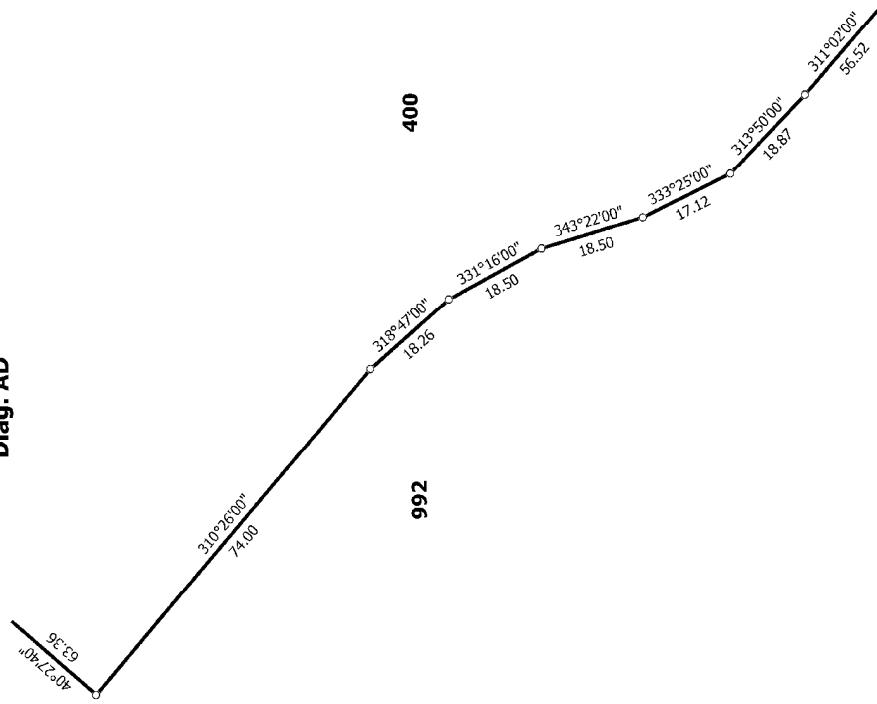
Surveyor: Christopher David Hawes
Firm: Davie Lovell-Smith Ltd

Lots 242-245, 251-267, 400, 401, 992, 993 and 1001 being Subdivision of Lot
925 DP 479877 and Lots 1 & 2 DP 3256

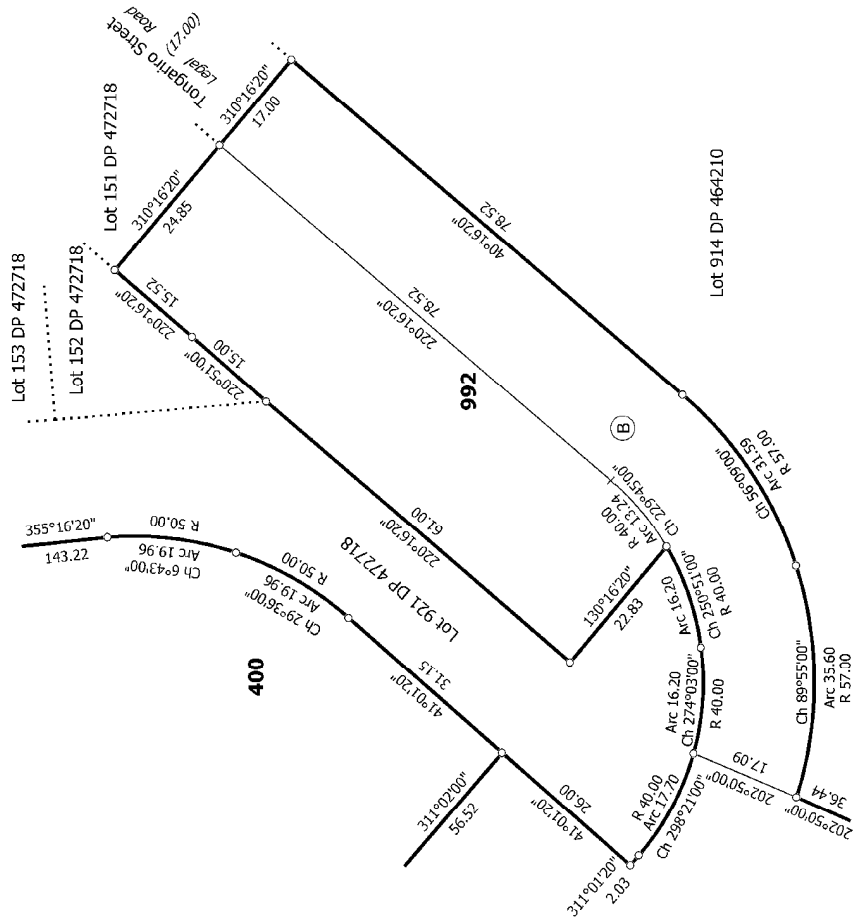
Land District: Canterbury
Digitally Generated Plan
Generated on: 19/03/2015 4:20pm Page 2 of 10



Diag. AD



Diag. AF



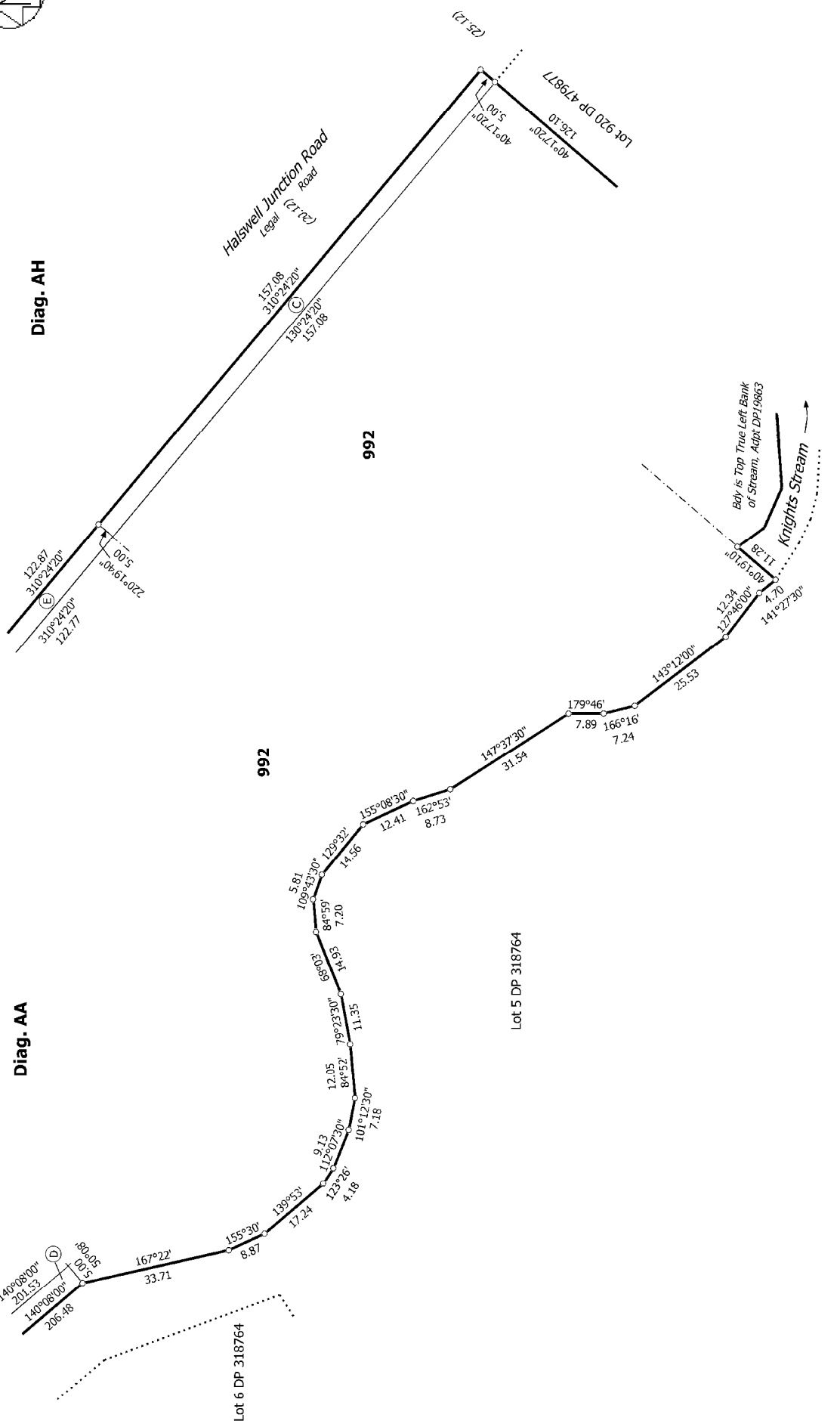
T 517

Land District: Canterbury	Surveyor: Christopher David Hawes Firm: Davie Lovell-Smith Ltd	Title Plan LT 484831 DRAFT
Digitally Generated Plan Generated on: 19/03/2015 4:20pm Page 6 of 10		Lots 242-245, 251-267, 400, 401, 992, 993 and 1001 being Subdivision of Lot 925 DP 479877 and Lots 1 & 2 DP 3256



Diag. AA

Diag. AH

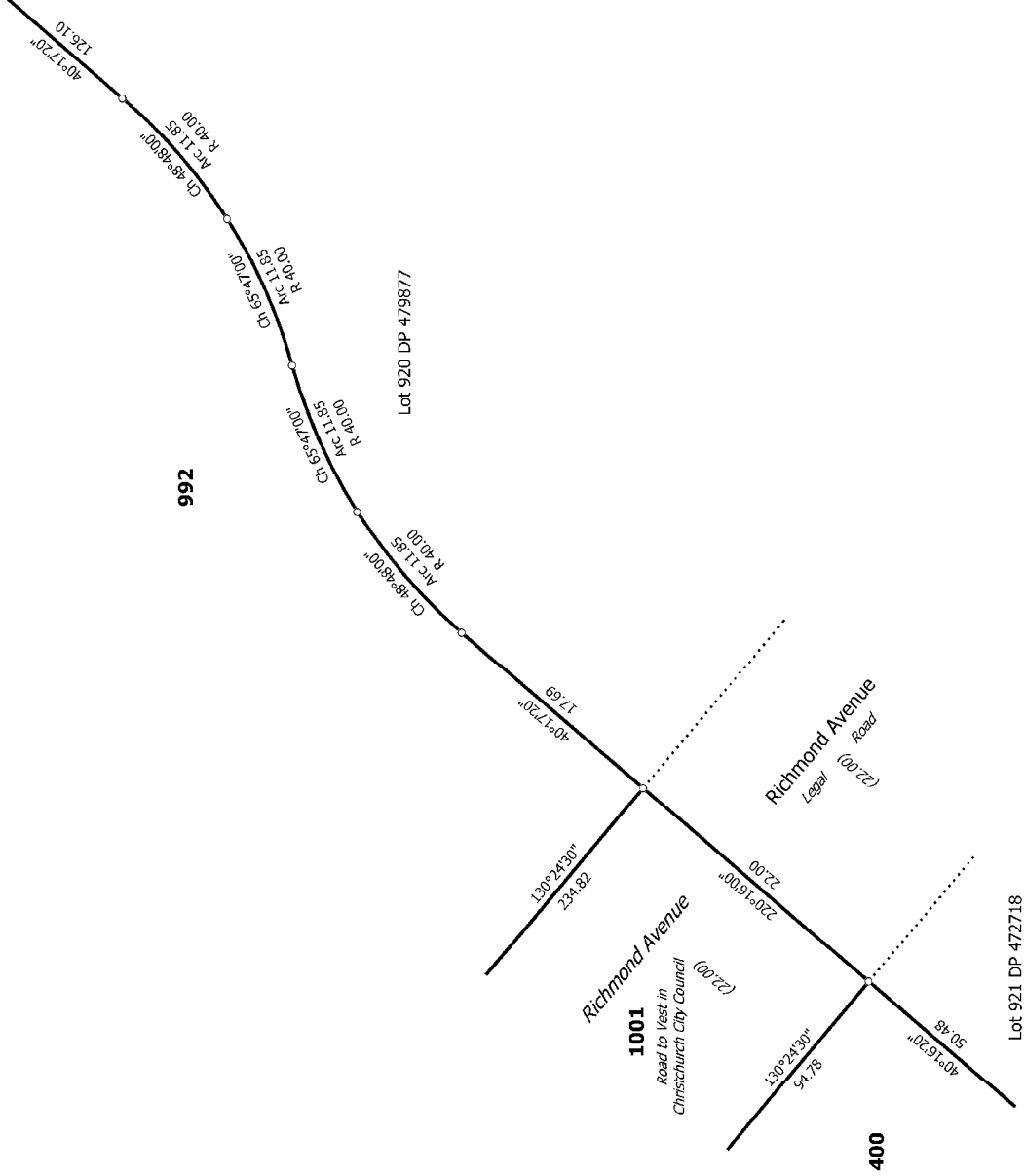


T 617

<p>Land District: Canterbury</p>	<p>Surveyor: Christopher David Hawes Firm: Davie Lovell-Smith Ltd</p>	<p>Title Plan LT 484831 DRAFT</p>
<p>Digitally Generated Plan Generated on: 19/03/2015 4:20pm Page 9 of 10</p>		<p>Lots 242-245, 251-267, 400, 401, 992, 993 and 1001 being Subdivision of Lot 925 DP 479877 and Lots 1 & 2 DP 3256</p>



Diag. AG



T 717

Land District: Canterbury	Surveyor: Christopher David Hawes Firm: Davis Lovell-Smith Ltd	Title Plan LT 484831 DRAFT
Lots 242-245, 251-267, 400, 401, 992, 993 and 1001 being Subdivision of Lot 925 DP 479877 and Lots 1 & 2 DP 3256		Digitally Generated Plan Generated on: 19/03/2015 4:20pm Page 10 of 10